

Introduction to Session beans

EJB - continued

Local Interface

```
/**
 * This is the HelloBean local interface.
 *
 * This interface is what local clients operate
 * on when they interact with EJB local objects.
 * The container vendor will implement this
 * interface; the implemented object is the
 * EJB local object, which delegates invocations
 * to the actual bean.
 */
public interface HelloLocal extends javax.ejb.EJBLocalObject
{
    /**
     * The one method - hello - returns a greeting to the client.
     */
    public String hello();
}
```

May throw
EJBException
instead of
RemoteException

Local Home Interface

```
/**
 * This is the home interface for HelloBean. This interface
 * is implemented by the EJB Server's tools - the
 * implemented object is called the Home Object, and serves
 * as a factory for EJB Objects.
 *
 * One create() method is in this Home Interface, which
 * corresponds to the ejbCreate() method in HelloBean.
 */
public interface HelloLocalHome extends javax.ejb.EJBLocalHome
{
    /**
     * This method creates the EJB Object.
     *
     * @return The newly created EJB Object.
     */
    HelloLocal create() throws javax.ejb.CreateException;
}
```

Local Client

```
Object ref = jndiContext.lookup("HelloHome");  
HelloHome home = (HelloHome)  
    PortableRemoteObject.narrow(ref,HelloHome.class);  
...  
HelloHome cabin_1 = home.create();
```

```
HelloLocalHome home = (HelloLocalHome )  
    jndiContext.lookup("java:comp/env/ejb/ HelloLocalHome ");  
...  
HelloLocalHome cabin_1 = home.create();
```

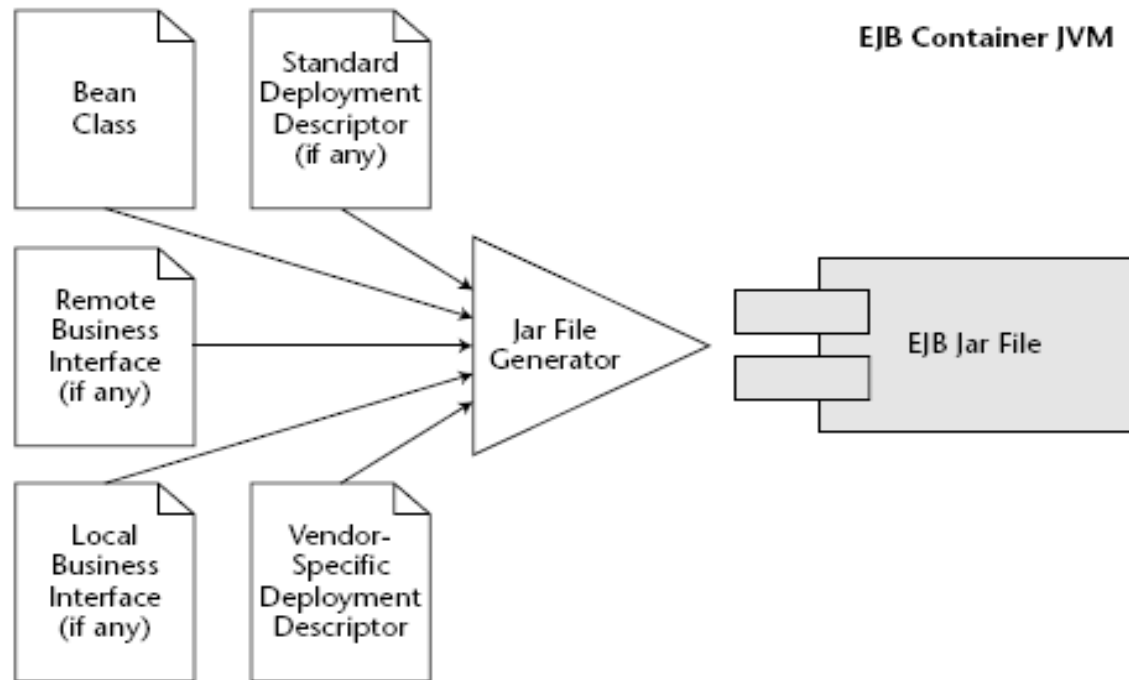
We looked up a bean in *java:comp/env/ejb*.
This is the JNDI location that the EJB specification recommends
(but does not
require) you put beans that are referenced from other beans.

Bean Implementation

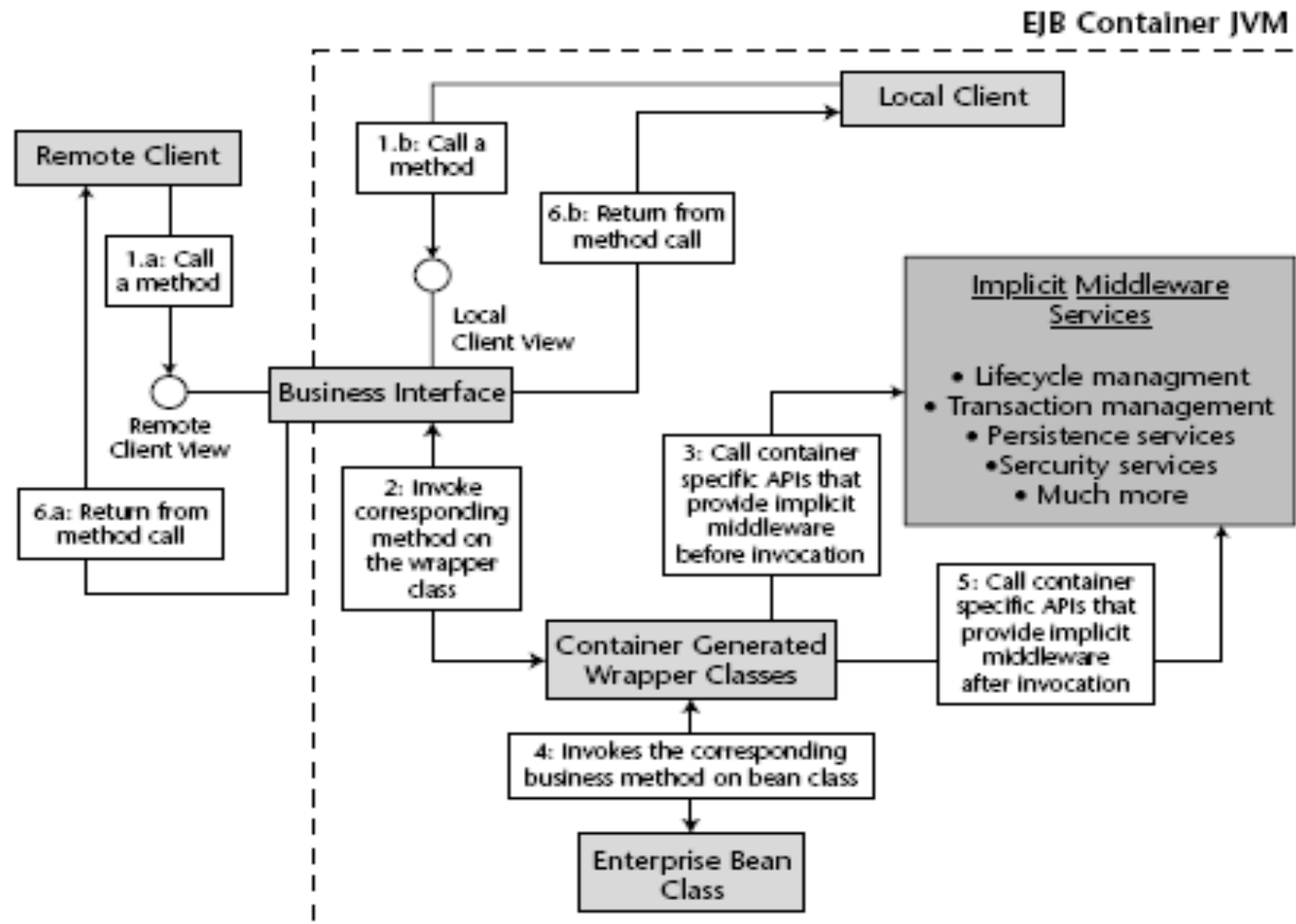
```
EJB 3.0 =====  
package examples.session.stateless;  
import javax.ejb.Local; import javax.ejb.Stateless;  
@Stateless  
@Local(Hello.class)  
public class HelloBean implements Hello {  
    public String hello() {  
        System.out.println("hello()"); return "Hello, World!";  
    }  
}
```

*enterprise
bean
instance*

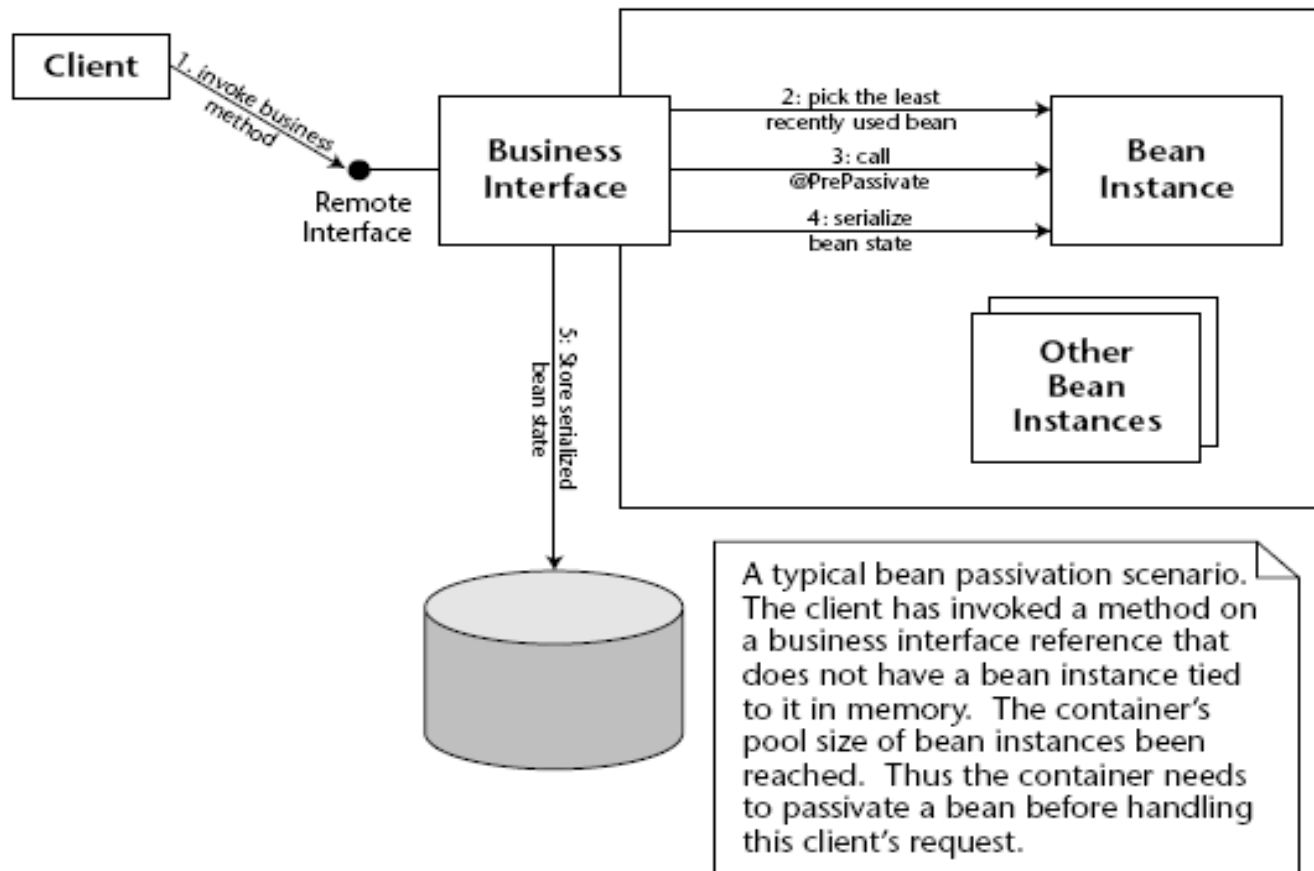
3.0 Packaging



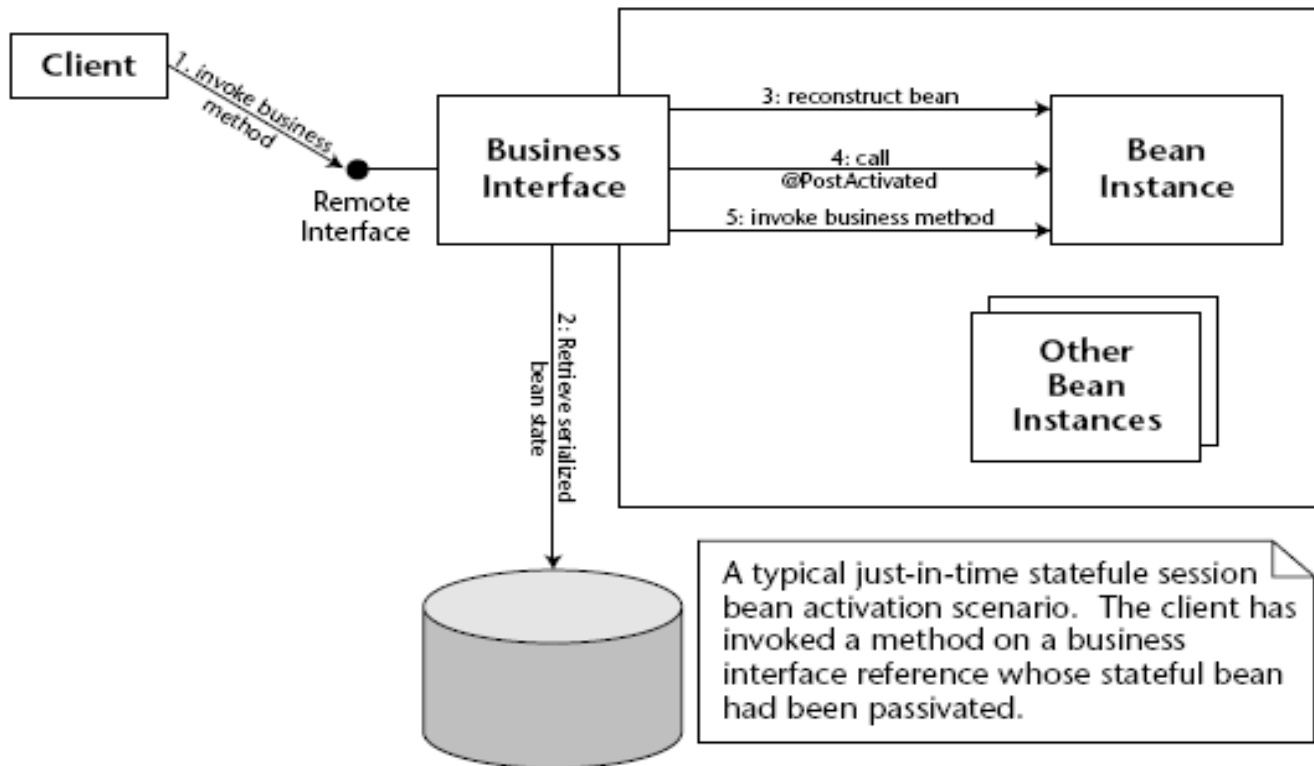
3.0 Lifecycle



Passivation



Activation



Managing the lifecycle – 3.0

```
@Stateful
public class MyBean {
    @PrePassivate
        public void passivate() {
            <close socket connections, etc...>
        }
    ...
    @PostActivate
        public void activate() {
            <open socket connections, etc...>
        }
    ...
}
```