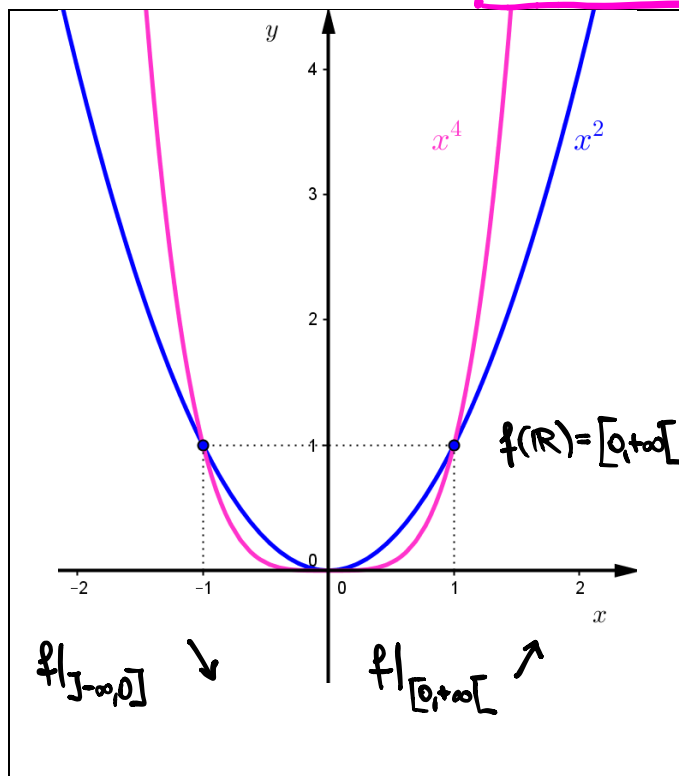
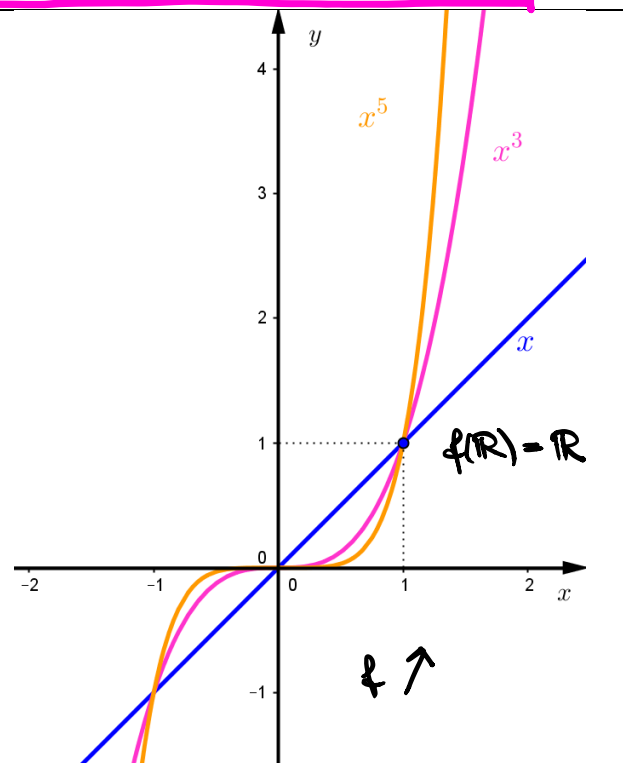


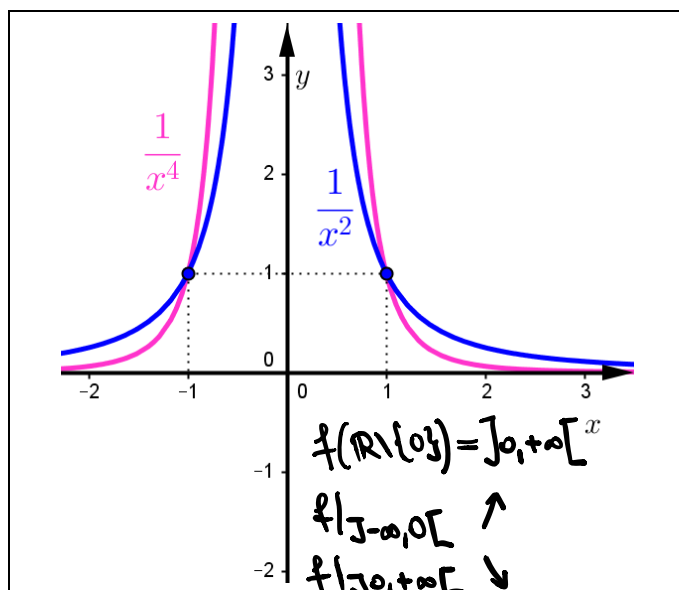
DA CONOSCERE COME LE
PROPRIE TASCHE!



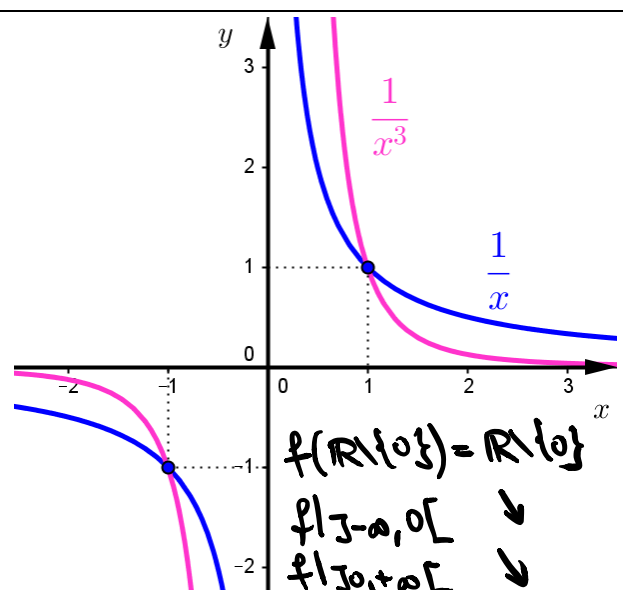
Funzione potenza pari
 $f(x) = x^{2n}$, $x \in \mathbb{R}$



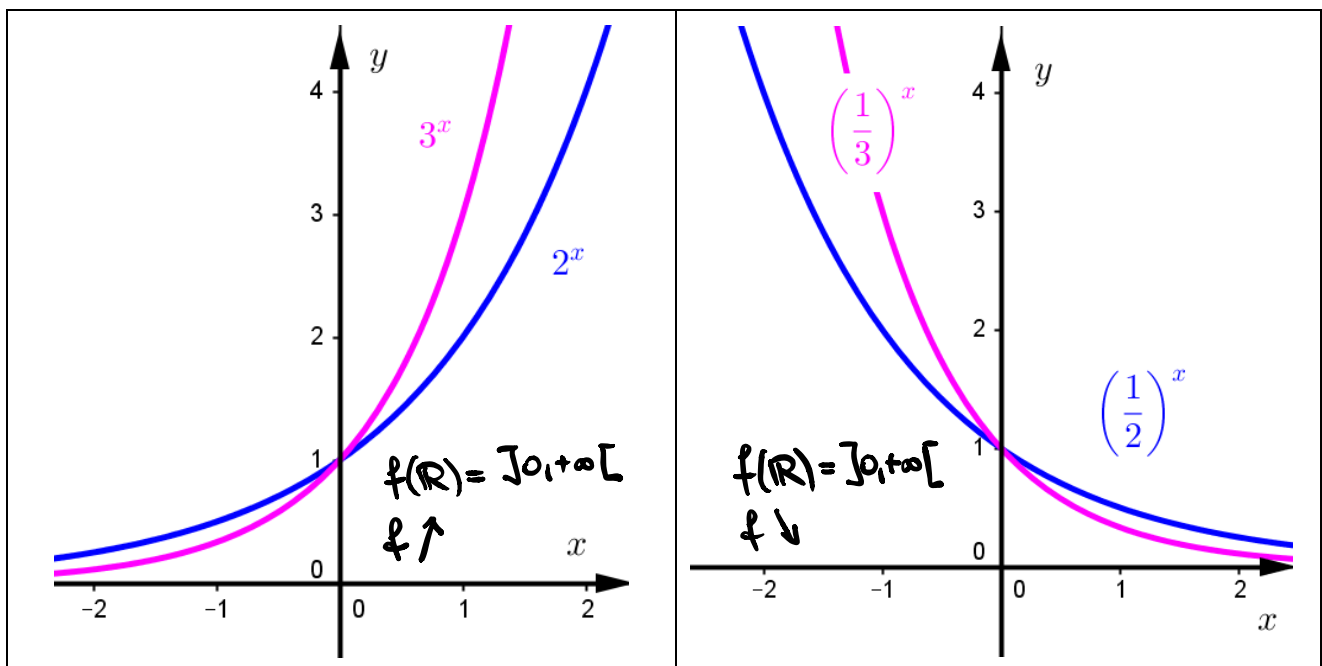
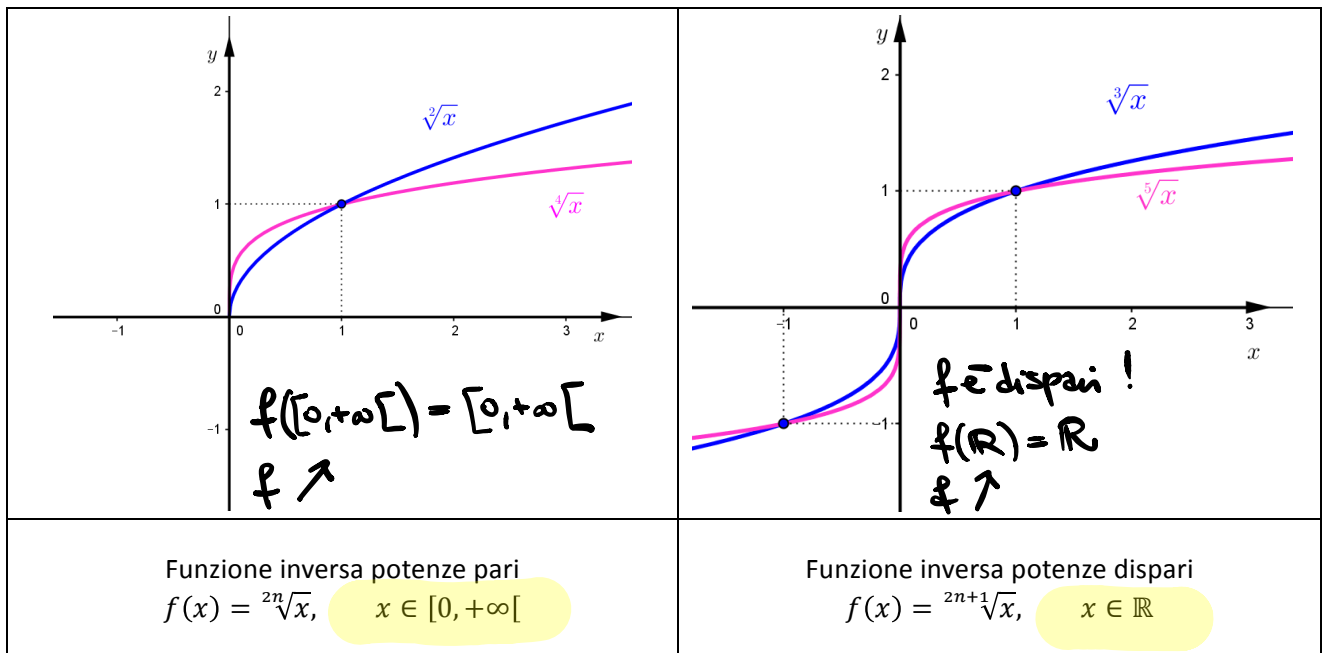
Funzione potenza dispari
 $f(x) = x^{2n+1}$, $x \in \mathbb{R}$



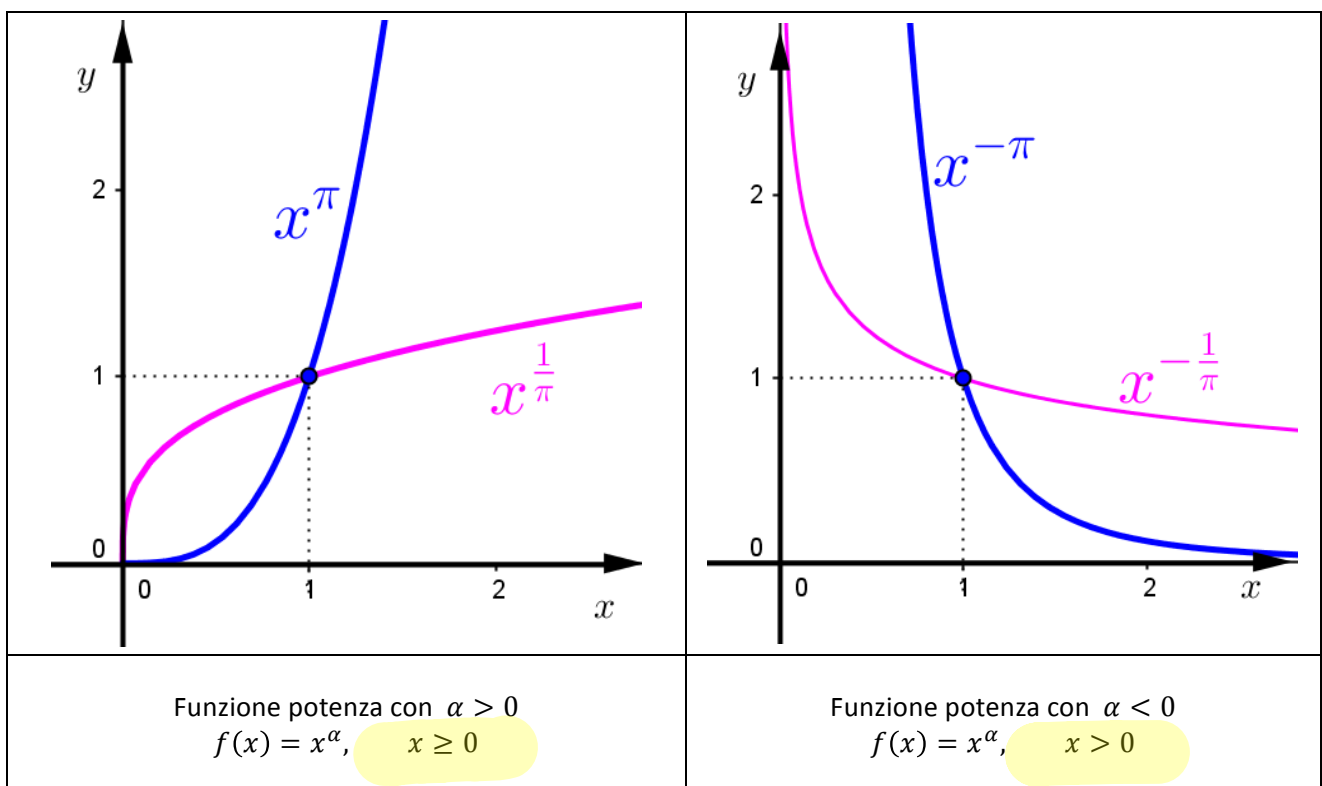
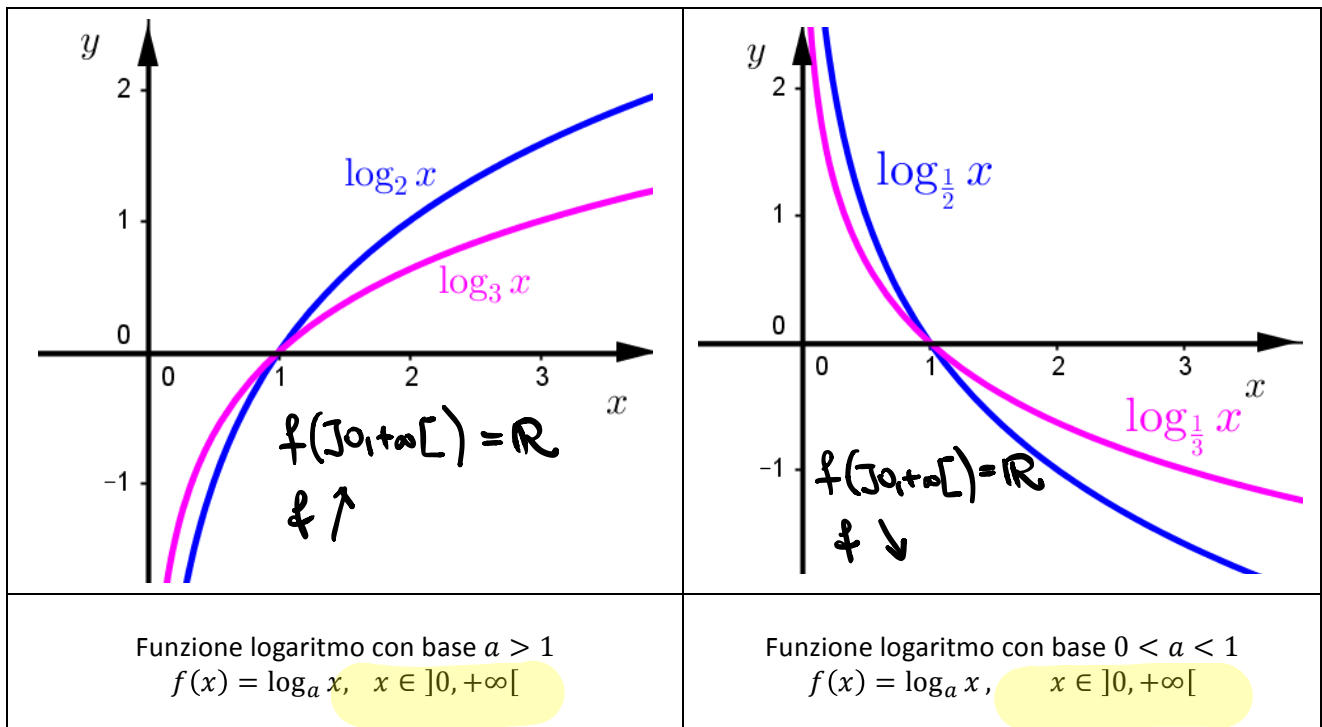
Funzione reciproca potenze pari
 $f(x) = \frac{1}{x^{2n}}$, $x \in \mathbb{R} \setminus \{0\}$

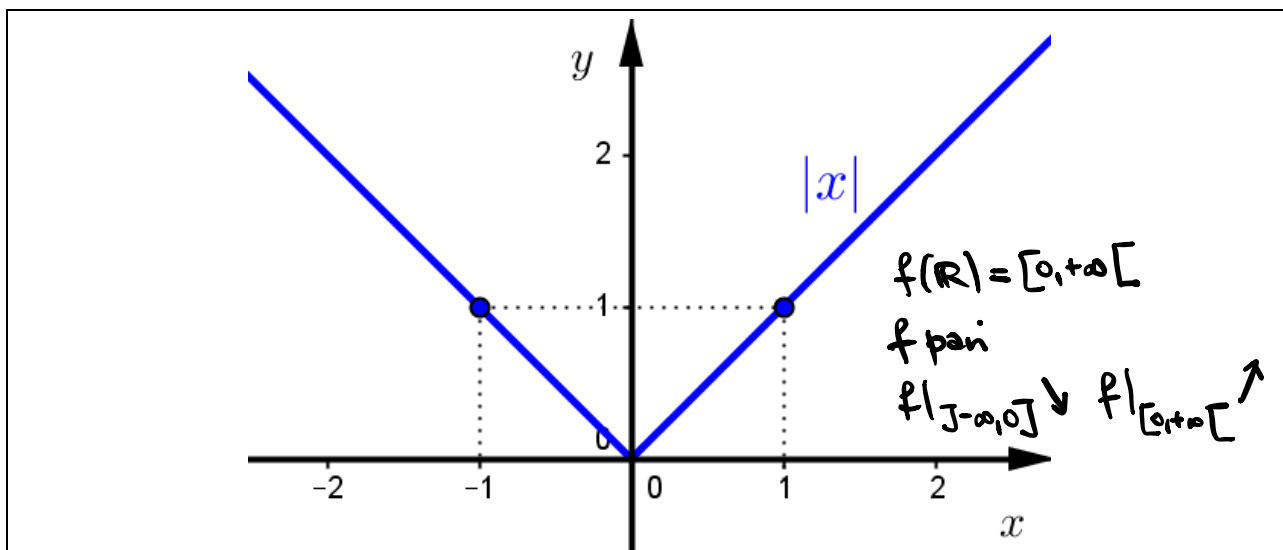


Funzione reciproca potenze dispari
 $f(x) = \frac{1}{x^{2n+1}}$, $x \in \mathbb{R} \setminus \{0\}$

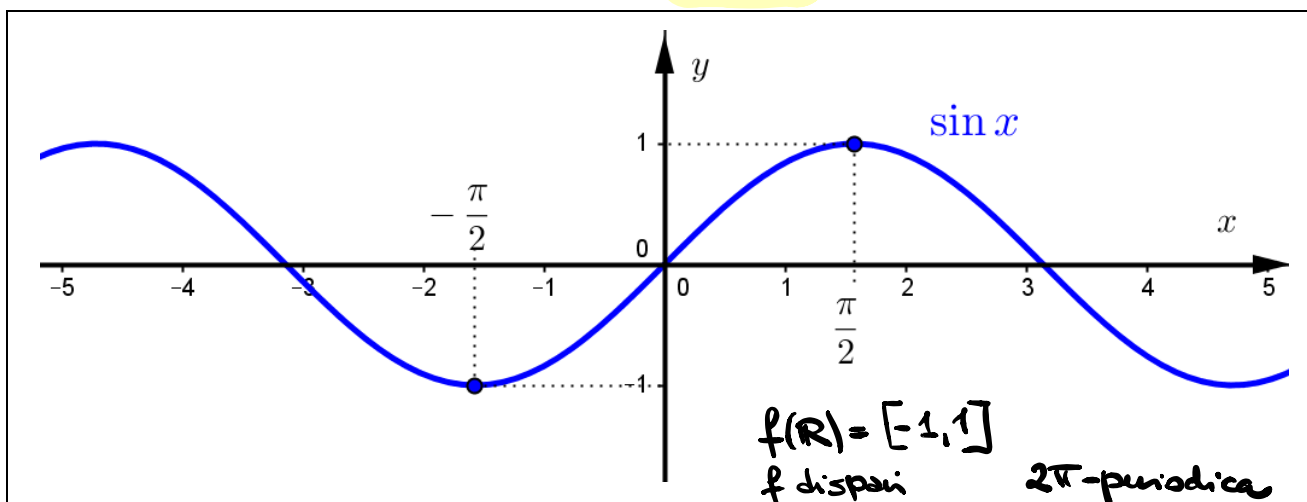


<p>Funzione esponenziale con $a > 1$ $f(x) = a^x, \quad x \in \mathbb{R}$</p>	<p>Funzione esponenziale con $0 < a < 1$ $f(x) = a^x, \quad x \in \mathbb{R}$</p>
---	--

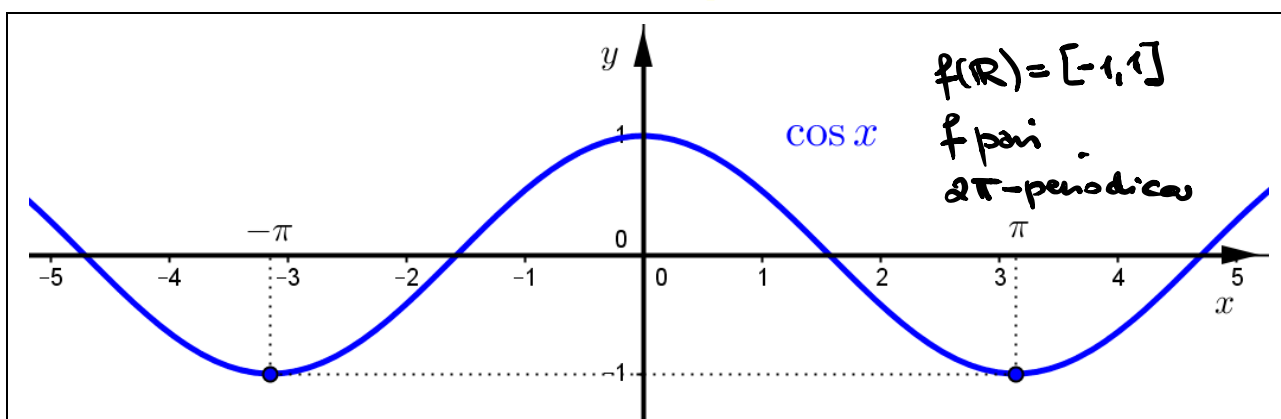




Funzione valore assoluto
 $f(x) = |x|$, $x \in \mathbb{R}$



Funzione seno
 $f(x) = \sin x$, $x \in \mathbb{R}$



Funzione coseno
 $f(x) = \cos x$, $x \in \mathbb{R}$

