

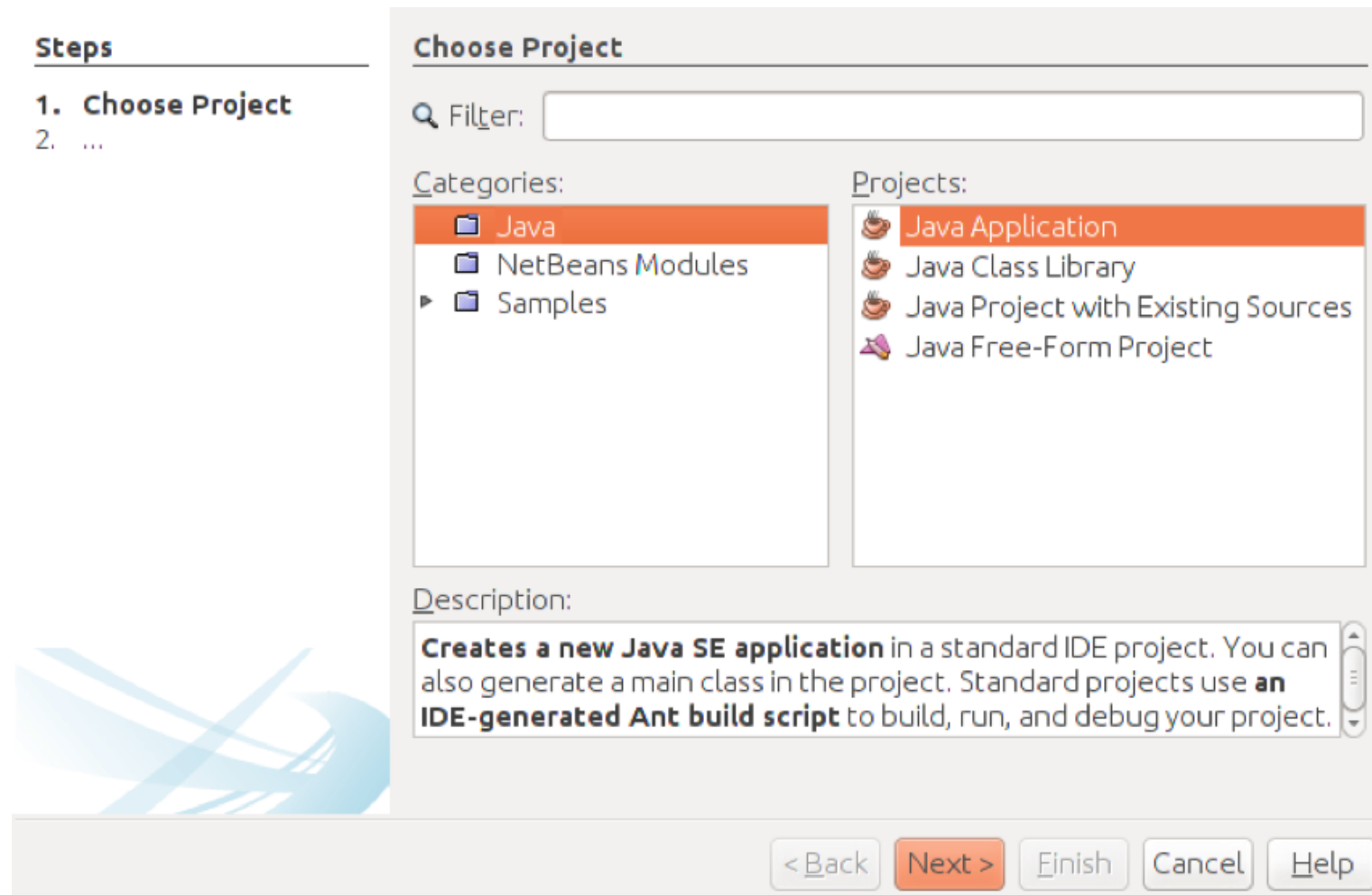
Linguaggi di Programmazione

mod.1

Soluzione di problem comuni con
Netbeans
A. Rosani

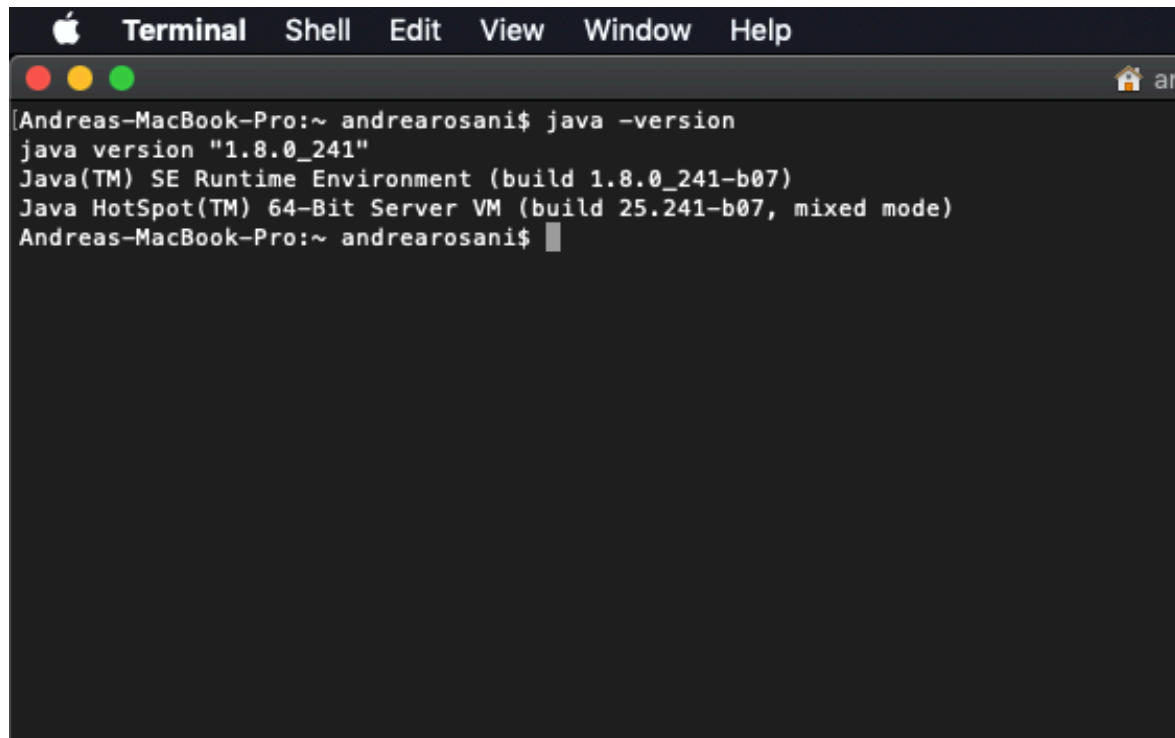
Uso di Netbeans - troubleshooting

Problema: non vedo il menu' con "Java Application"



Uso di Netbeans - troubleshooting

Soluzione1: verifica di avere la versione corretta di Java (JDK)

A screenshot of a macOS Terminal window. The title bar at the top shows the Apple logo, the word 'Terminal', and menu items: 'Shell', 'Edit', 'View', 'Window', and 'Help'. Below the title bar, the terminal content shows a command prompt '[Andreas-MacBook-Pro:~ andrearosani\$' followed by the command 'java -version'. The output of the command is displayed on the next three lines: 'java version "1.8.0_241"', 'Java(TM) SE Runtime Environment (build 1.8.0_241-b07)', and 'Java HotSpot(TM) 64-Bit Server VM (build 25.241-b07, mixed mode)'. The prompt returns to '[Andreas-MacBook-Pro:~ andrearosani\$' with a cursor at the end.

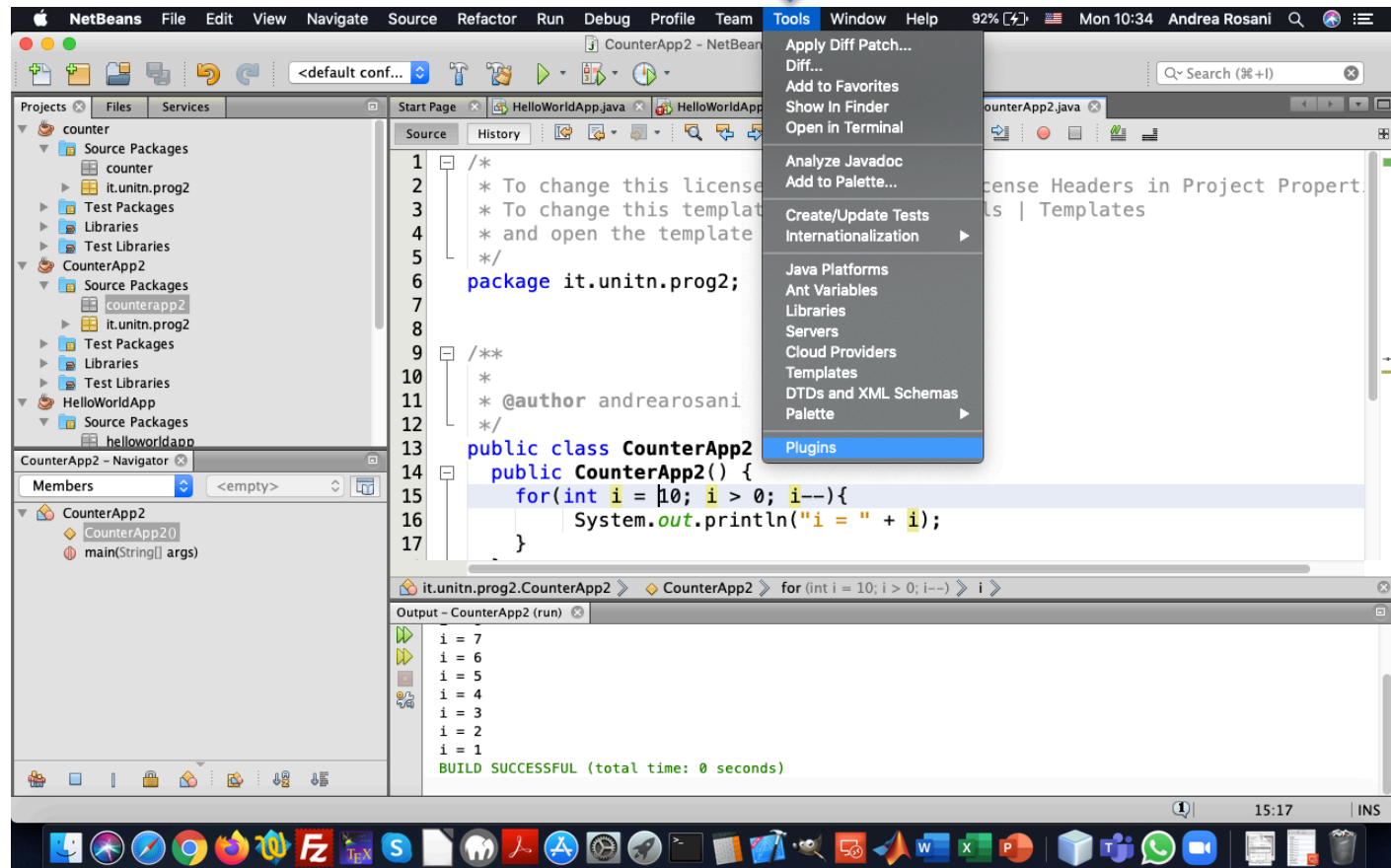
```
[Andreas-MacBook-Pro:~ andrearosani$ java -version
java version "1.8.0_241"
Java(TM) SE Runtime Environment (build 1.8.0_241-b07)
Java HotSpot(TM) 64-Bit Server VM (build 25.241-b07, mixed mode)
Andreas-MacBook-Pro:~ andrearosani$
```

Apri un terminale (Windows cmd, Mac/Linux terminal) e digita `java -version`
JDK deve essere alla versione 8 (non quindi alla 11 o alla 13)

Uso di Netbeans - troubleshooting

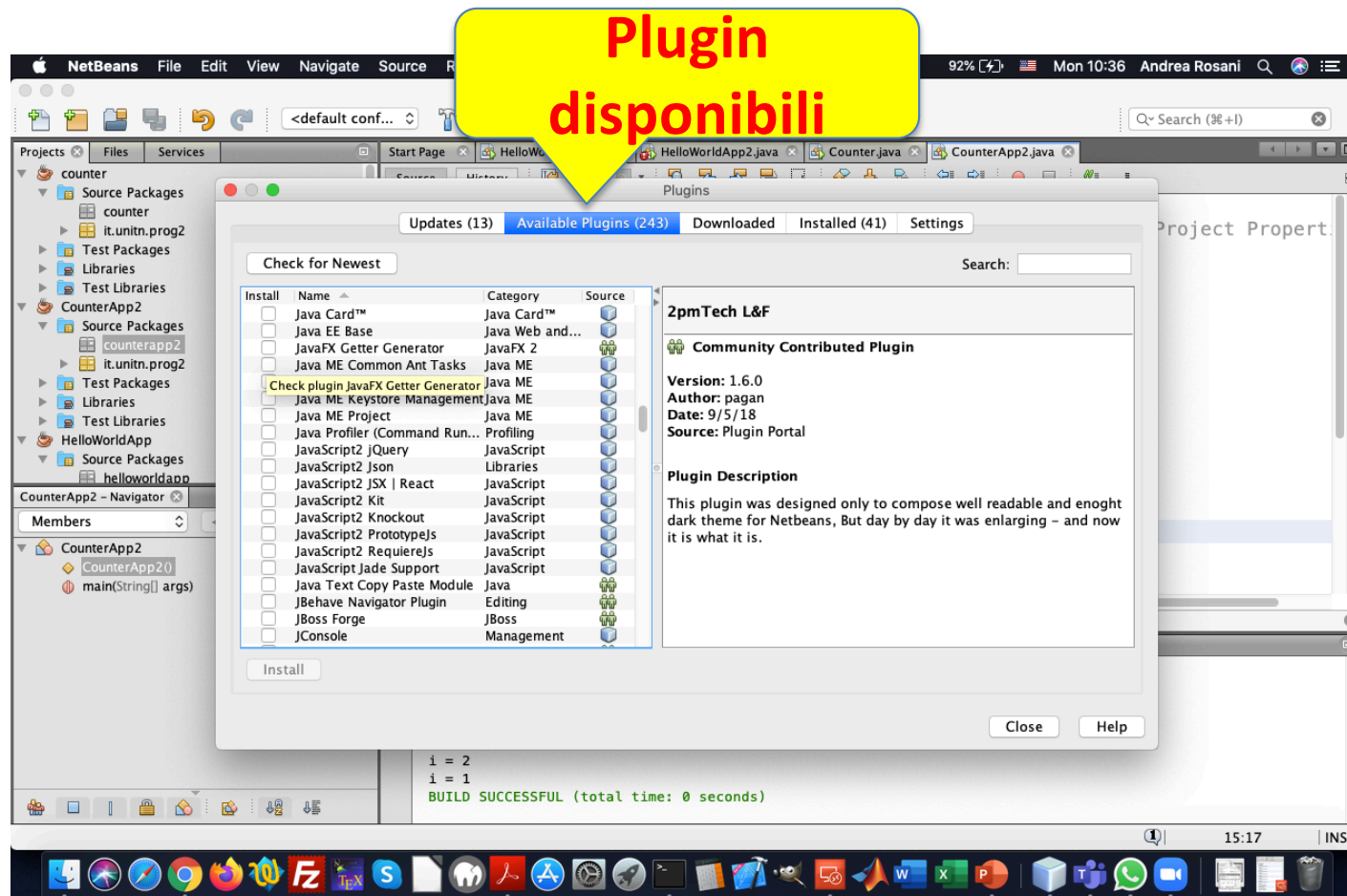
Soluzione2: abilitare in Netbeans i Plugin Java

Tools



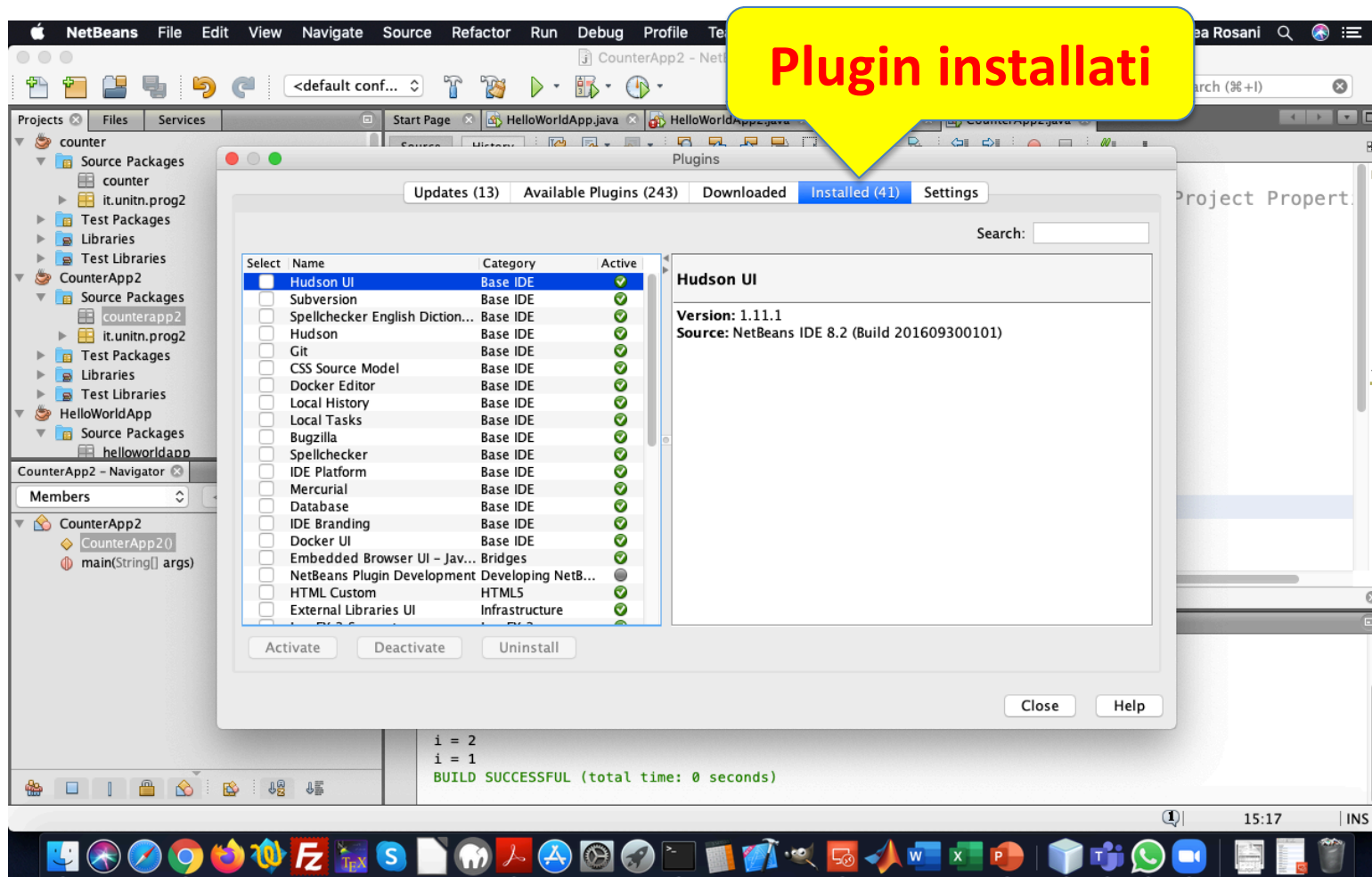
Uso di Netbeans - troubleshooting

Soluzione2: abilitare in Netbeans i Plugin Java



Uso di Netbeans - troubleshooting

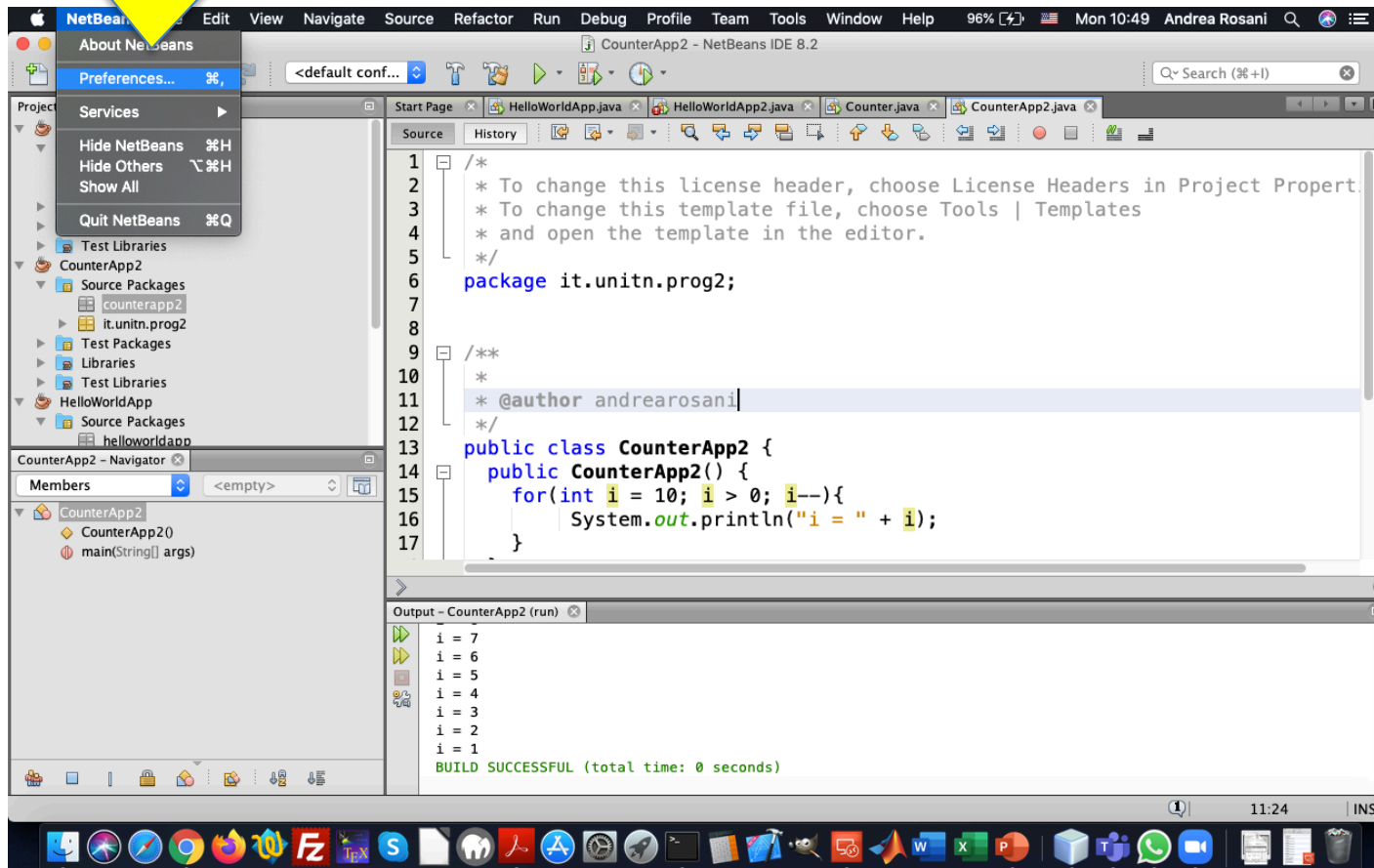
Soluzione2: abilitare in Netbeans i Plugin Java



Uso di Netbeans - troubleshooting

Problema: il carattere dell'editor è troppo piccolo

Preferenze



Uso di Netbeans - troubleshooting

NOTA: In Windows e Linux si può avere lo stesso menu' in "Tools=>Options"

