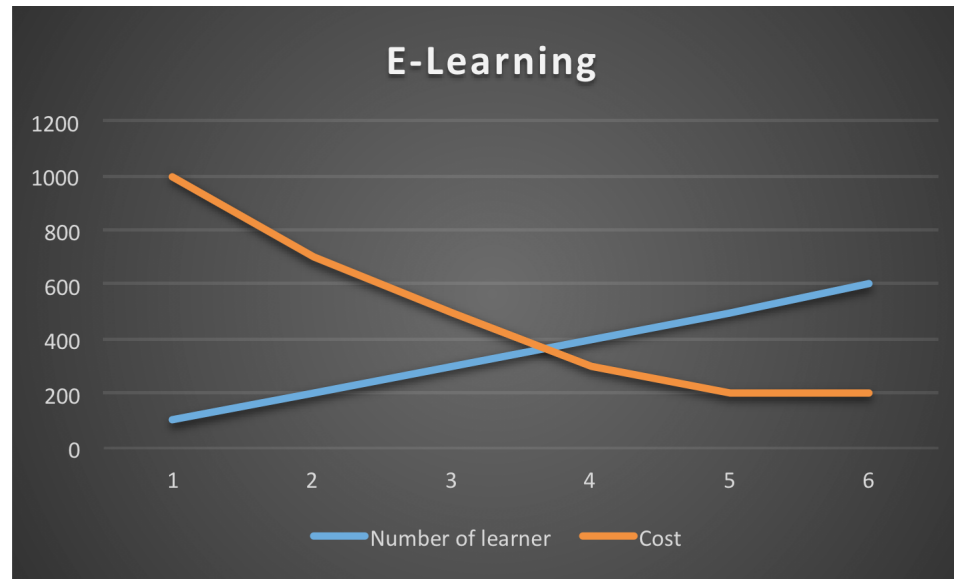


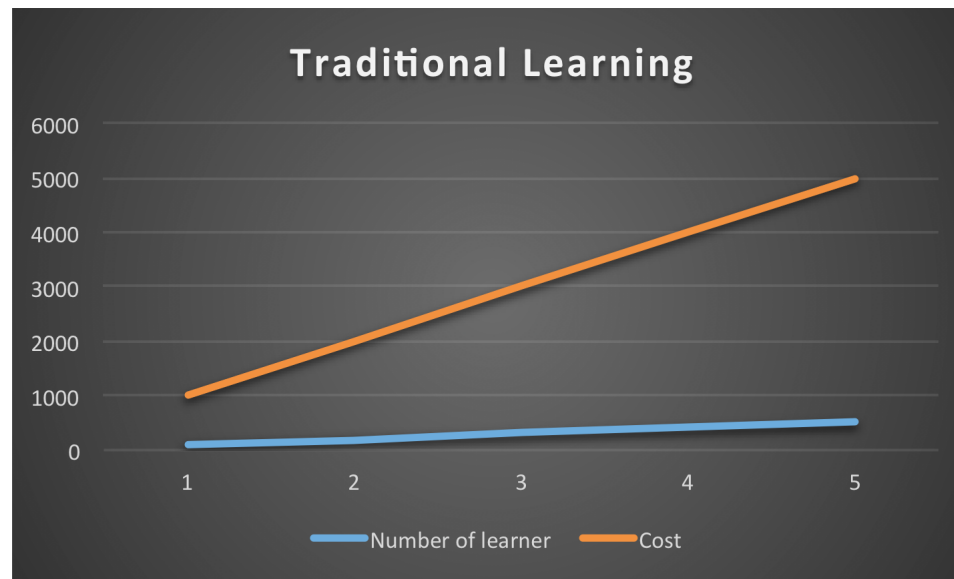
Assignment restitution

Sketch a graph which shows how the cost of traditional learning and e-learning scale at The function of the number of learners. (N.learners on the x - axis, cost on the y - axis).

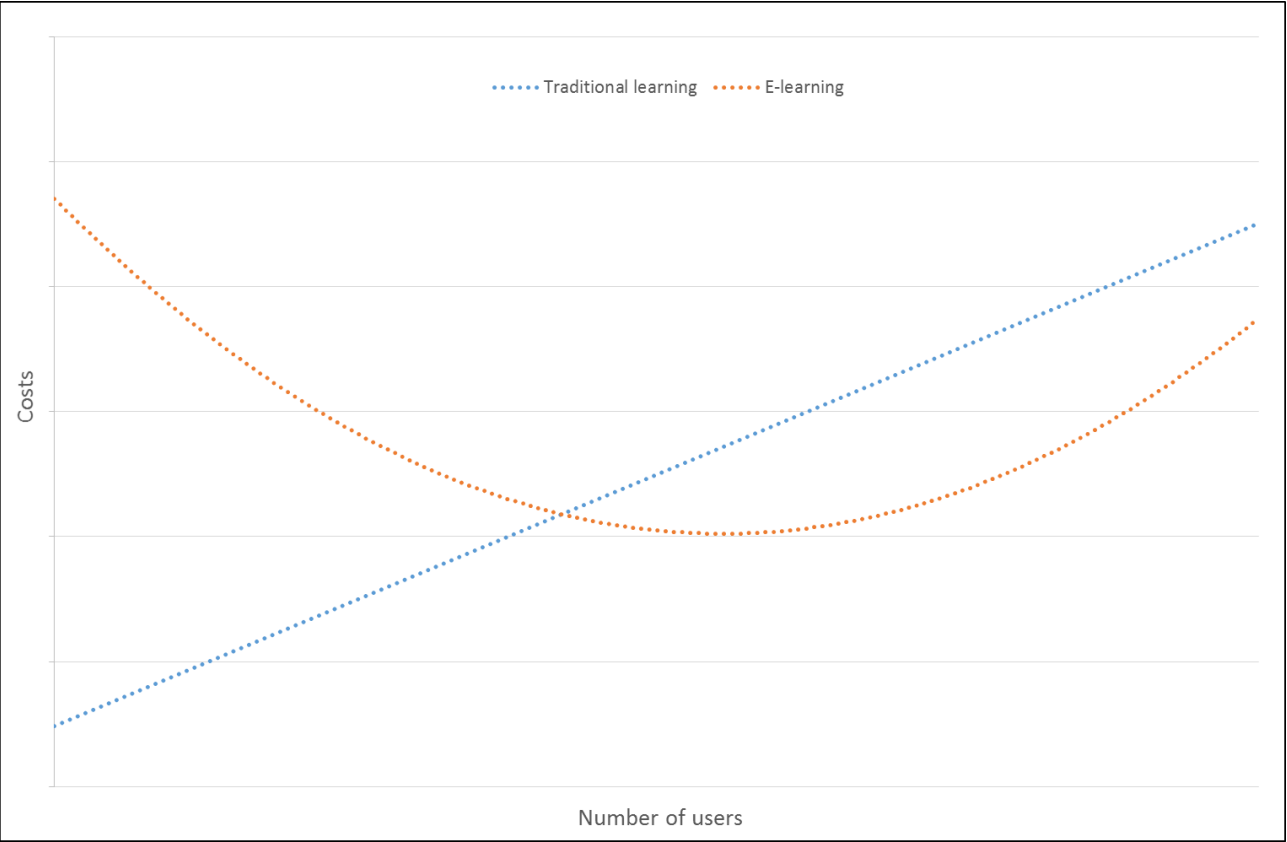
Find The way to include the graph in the report - Along with the first answer.

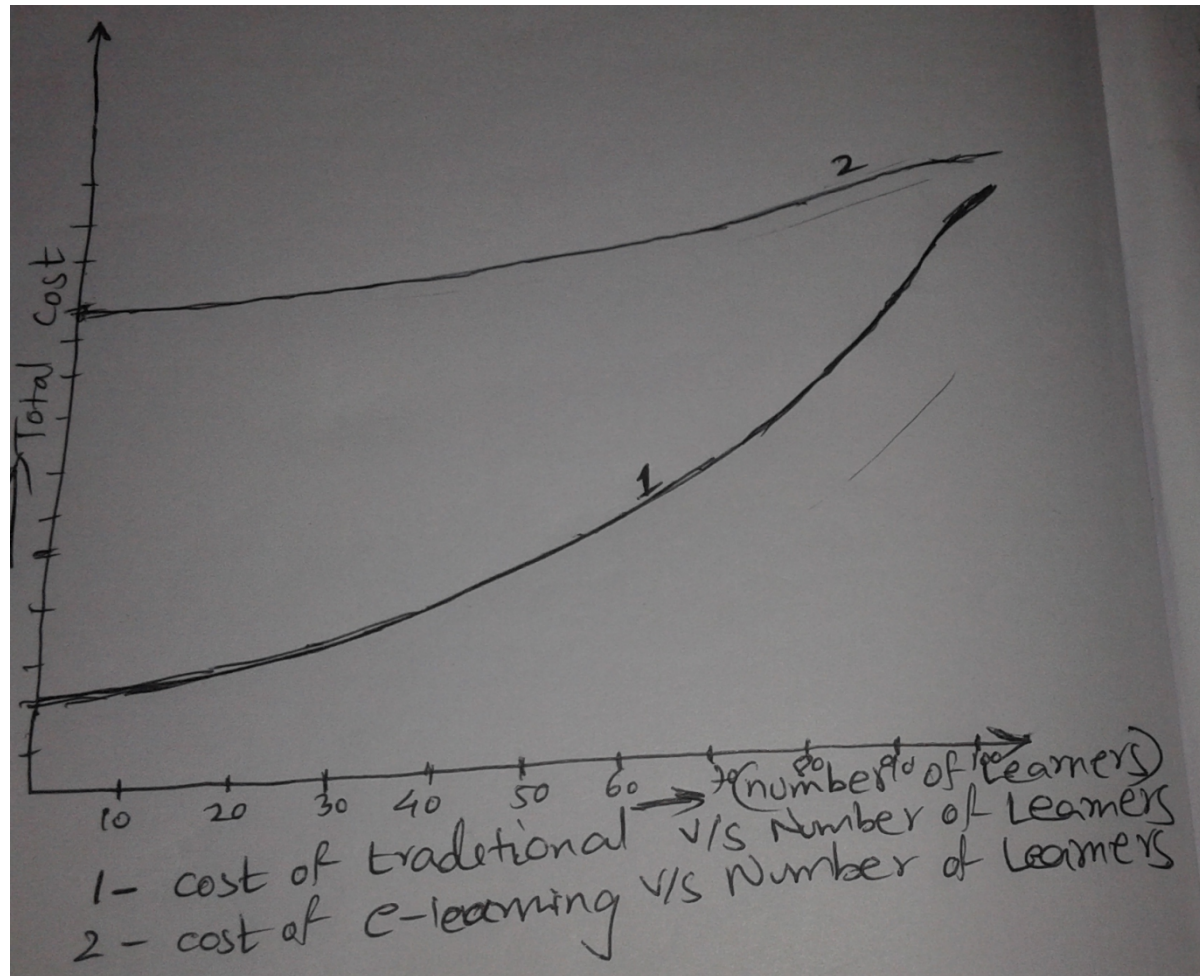


At the very beginning of e-learning, initial cost will be high due to the tools and the entire set-up. However, when the number of student will increase, the cost will reduce proportionately. Like the basic economic theory of demand-supply approach. 😊

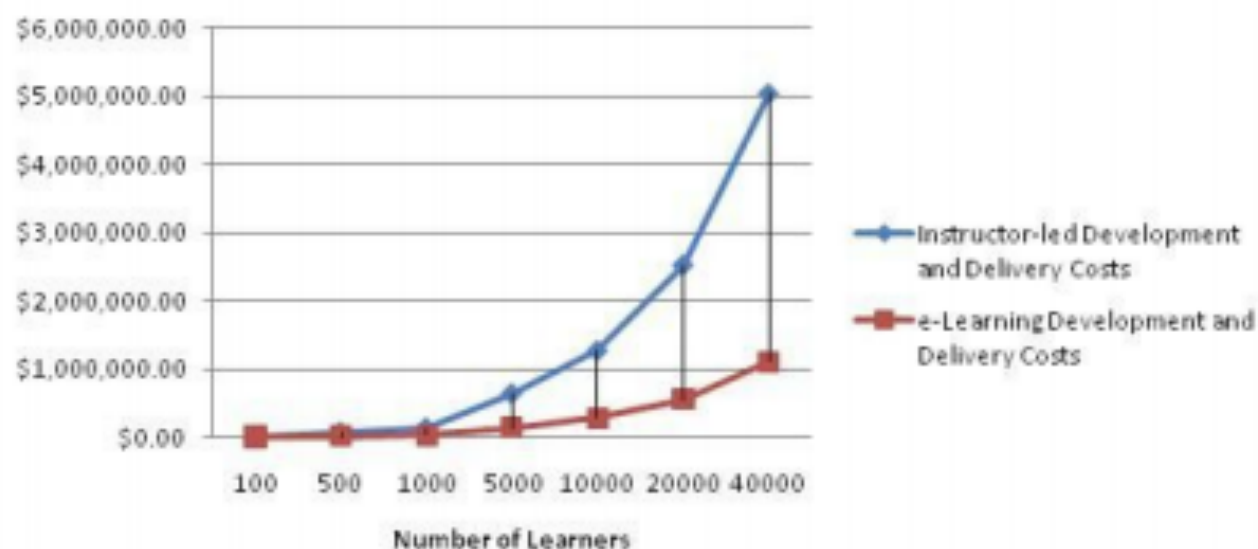


Here, we can see, when the number of learner will increase, the cost will increase gradually.



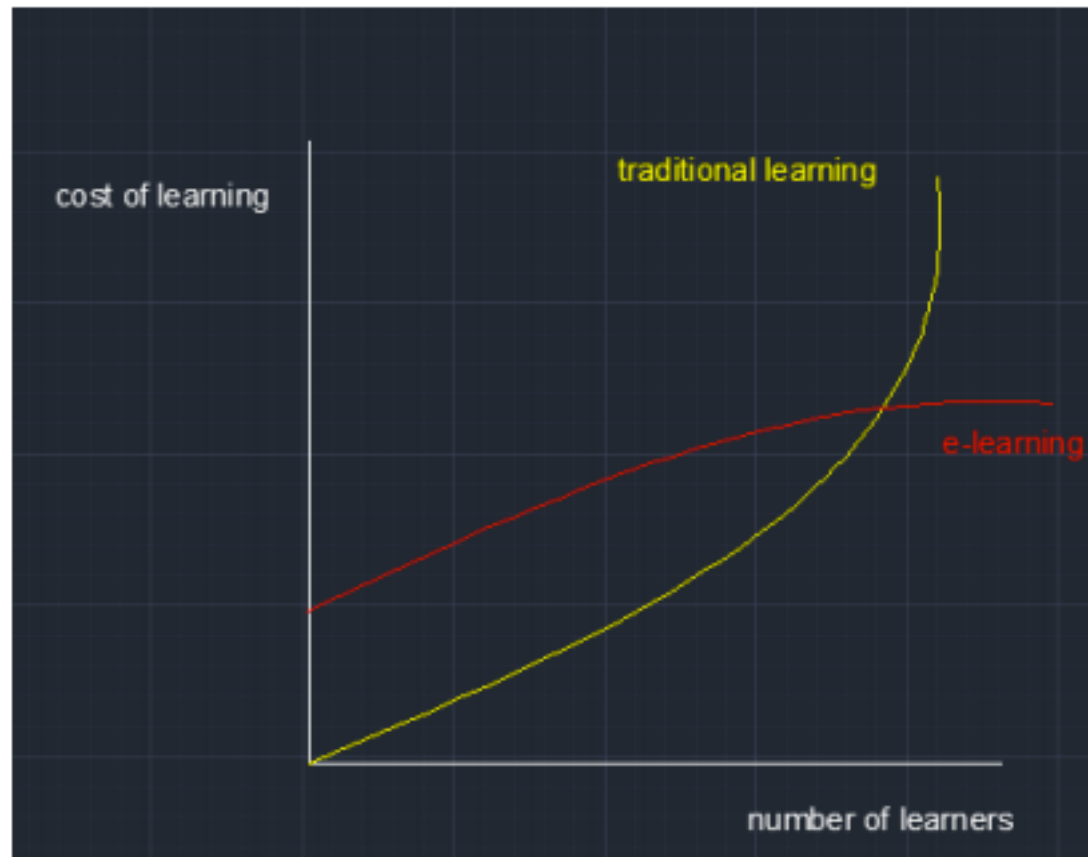


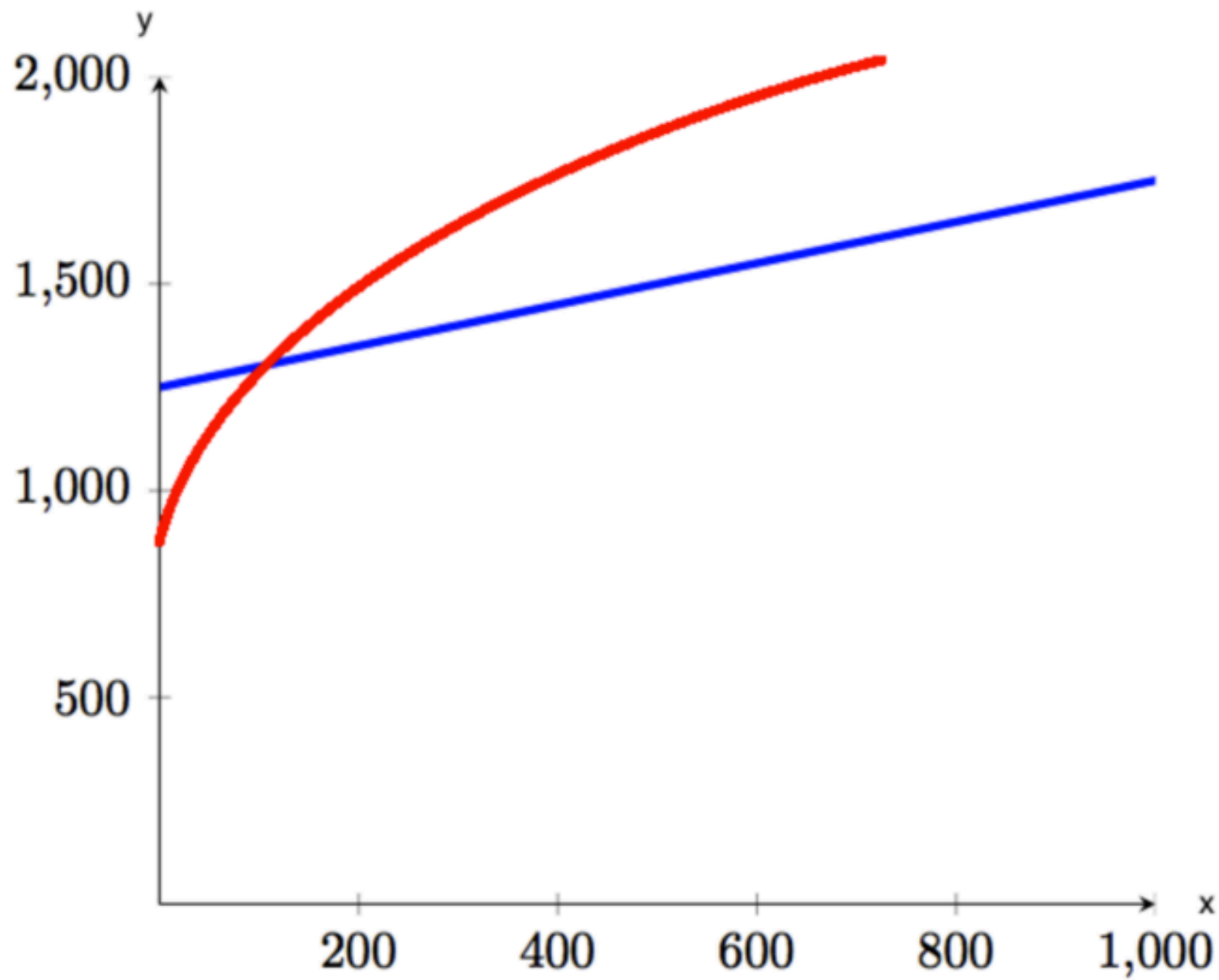
### Comparison of Instructor-led Development and Delivery costs vs. e-Learning for One-Hour Class



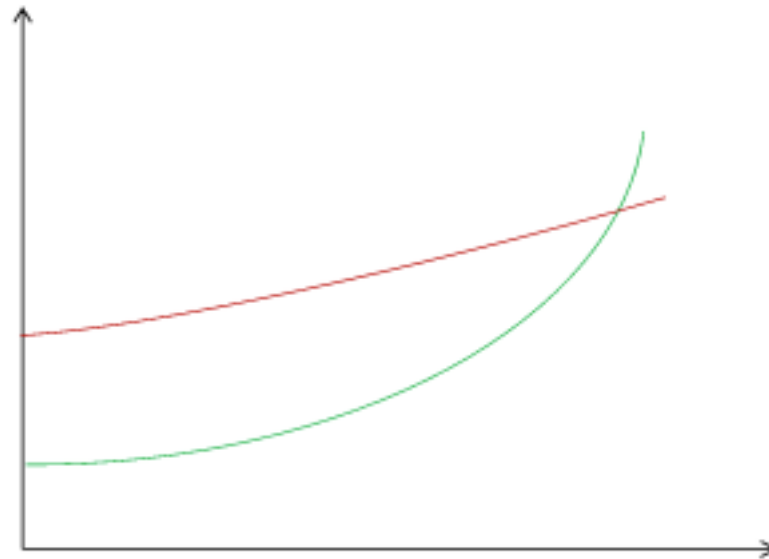
Source: ISS website accessed on 28/10/2015 -

<http://www.issart.com/blog/the-right-e-learning-solutions-for-your-business-or-organization/>



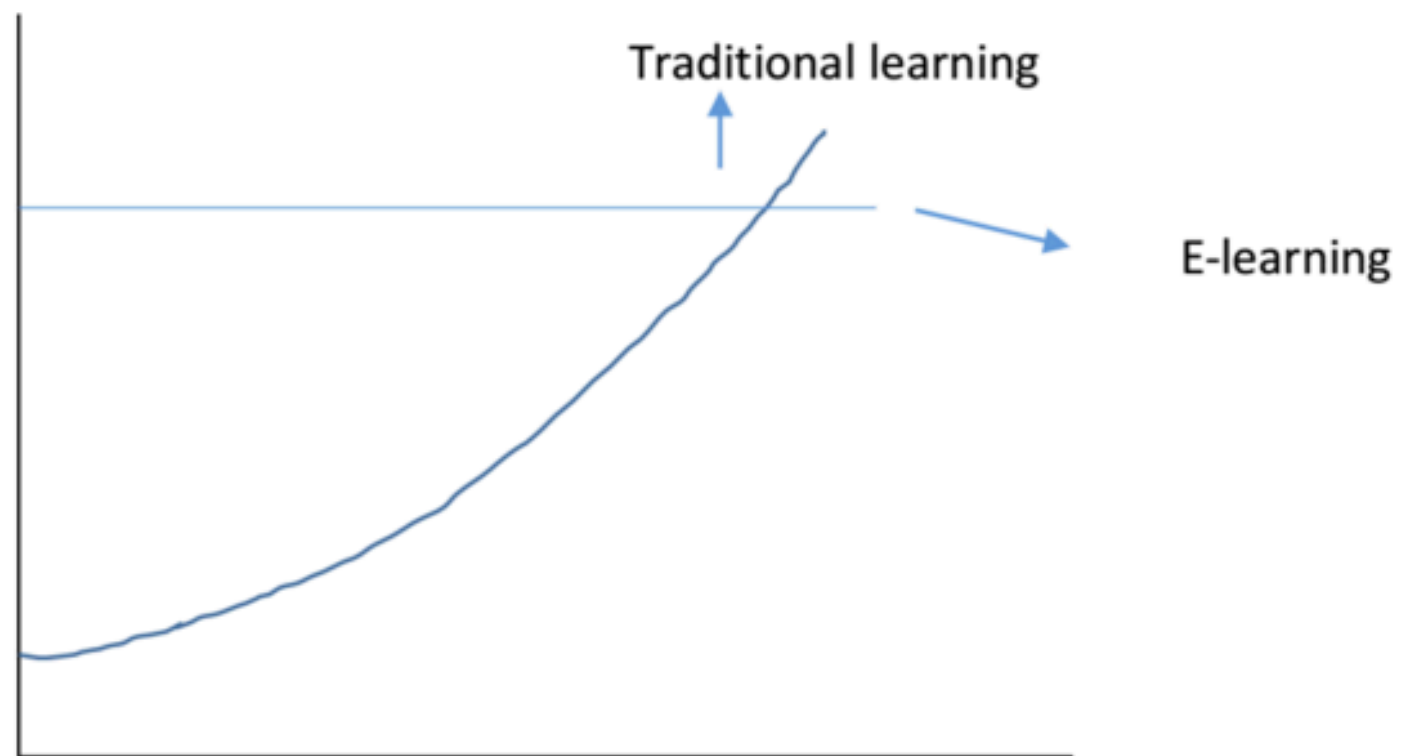


In x-axis there is the number of learners and on the y-axis there is the cost. As shown in the



Red= e-learning ; Green= traditional training.

Total cost of learning



Number of learners